

LAPSTONE

Description of the area surveyed

The Lapstone study area is focussed on the commuter parking area adjacent to the Lapstone Railway Station. The area includes Explorers Road adjacent to the commuter car park.

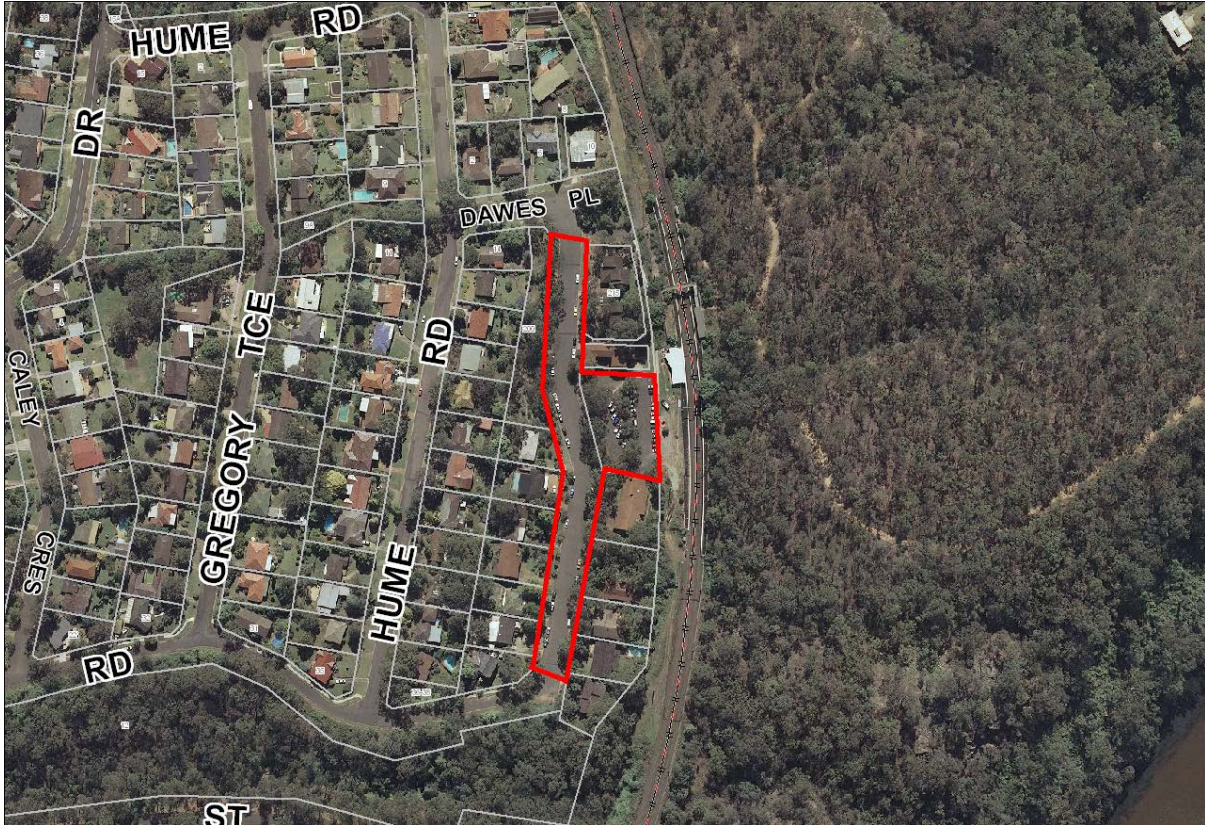


Fig. 1: Lapstone Study Area

Summary of parking in Lapstone

The commuter car park was at or near capacity on all the occasions surveyed with Explorers Road taking the overflow. Explorers Road has a 13 metre sealed road within a 20 metre road reserve, providing sufficient room for parking on both sides of the road.

There is no commercial centre in Lapstone. Demand for parking will vary depending on the demand for trains and the availability of parking in an accessible location to the railway station.

Adjoining and adjacent land uses

Development in Lapstone is almost entirely detached dwelling houses including the areas within and adjacent to the study area. Developments to the north of the commuter car park include 2 allotments with town houses.

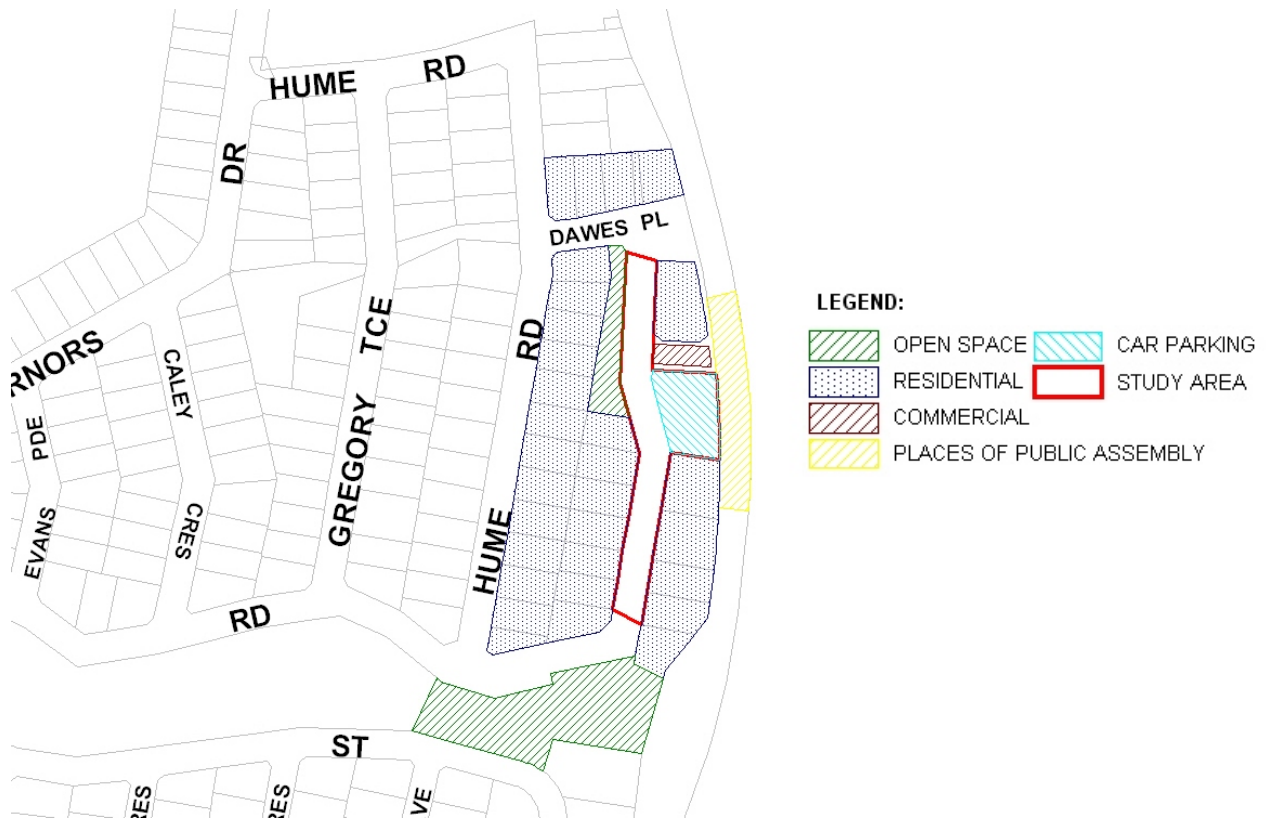


Fig. 2: Lapstone Study Area Land Uses

Characteristics

- Off-Street Parking
 - Restrictions
The commuter car park has spaces for 36 cars.
 - Accessible Spaces
There is accessible parking available in the commuter parking area.
- On-Street Parking
 - Restrictions
Overflow parking from the commuter carpark can be accommodated on Explorers Road.
- Bus, Train and Taxi Services
A regular bus service operates between Penrith and Faulconbridge stopping at Governors Road or Lapstone station.

There are 30 trains per day stopping at Lapstone station heading towards the Sydney metropolitan area with a similar number returning. Lapstone is the first railway station beyond the suburban network on the Blue Mountains line. Some city-bound Blue Mountains commuters drive and park at Lapstone- minimising time spent on the train commute.

Links

- Roads
Access to the commuter parking area is via Explorers Road. Explorers Road is accessed by Lucasville Road in Glenbrook. There are road verges on Explorers Road which are generally mown and suitable for pedestrian access.
- Footpaths
Footpaths are paved in Explorers Road linking to Governors Drive.
- Bike/Shared Paths
The Blue Mountains Bike Plan has identified Routes L1. Regional route is located along the Great Western Highway.

Safety & Security

- Lighting
Security lighting is provided in the commuter car park as well as street lighting.
- Vegetation
There are native trees within the commuter car park and well established trees in adjacent private gardens. Casual surveillance is restricted due to the vegetation.

Signage

- Directional
There is no directional signage to the commuter car park except for the sign at the entrance. Parking is not time restricted in Lapstone. Signage is adequate given that the parking area caters for local residents.
- Parking Restrictions
Parking is not restricted at this location.

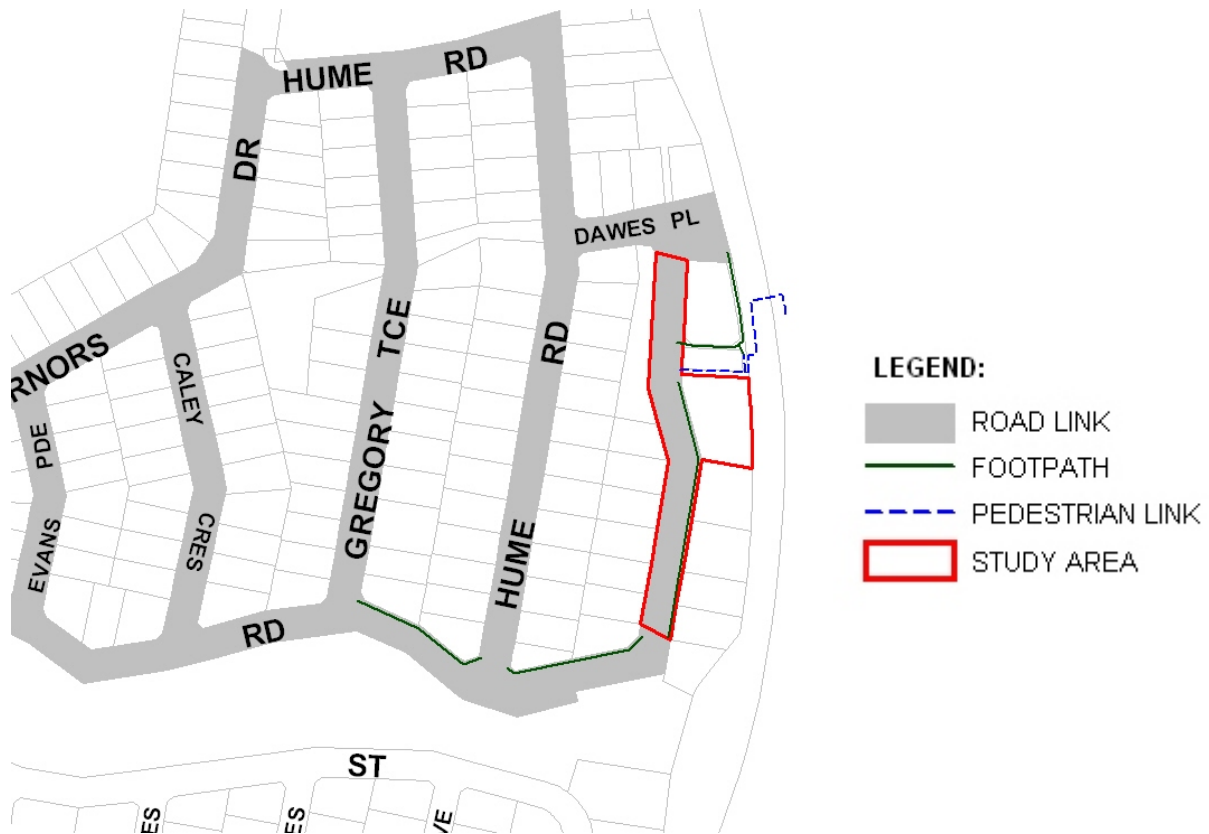


Fig. 3: Lapstone Study Area Links

Community demographics

In 2016 Lapstone had a population of around 962 residents in 356 dwellings. Forecast i.d.¹ estimate that the population of the Glenbrook-Lapstone area will remain steady to 2036.

In 2011, 76 people travelled to work by public transport for some or all their journey which is a slight decrease from the 2006 figures and also from the 2001 figures. In 2011, 284 people travelled to work by private vehicle which is a slight increase from the 2006 figures. The number of people in Lapstone in employment has remained steady over the same period but there has been an increase in the number of people working from home.

Capacity

- Peaks

The commuter car park was observed to be at capacity, with space for vehicles to overflow at peak demand times into Explorers Road and even further afield if necessary. Changes to the train timetable or insufficient parking in other areas could result in changes to the demand for parking. Lapstone Train Station is not wheelchair accessible.

Rangers' Comments

No particular issues identified at this location.

Tourist Bus Parking

There is no demand for dedicated tourist bus parking.

¹ i.d. community 2017. Blue Mountains City Council Population Forecast, Forecast i.d. <http://forecast.id.com.au/blue-mountains>

Conclusion

Parking in Lapstone is focussed around the railway station and while the commuter car park was observed to be at capacity most weekdays, there is suitable overflow parking in Explorers Road. There is a paved footpath on the eastern side of Explorers Road in the vicinity of the station. The demand for parking has increased significantly between the 2011-2012 data and 2016 data; although the actual numbers of vehicles parked is relatively small. In conclusion, there is adequate supply of parking to meet the current demand in Lapstone although this should be viewed in the wider context of commuter parking provision in the lower Blue Mountains.

Recommendations

- L.1 Investigate more efficient use of space in commuter carpark to increase parking and improve access from on-street parking through to station.

Lapstone Data and Analysis

COMMUTER PARKING



Number of vehicles parked

	Spaces available	2010-2012		2015-2016		Difference	Maximum number/percentage occupancy
		Average occupancy - vehicles	Average percentage occupancy	Average occupancy - vehicles	Average percentage occupancy		
Commuter car park	36	33	92%	36	100%	+8%	36/100%
Explorers Road adjacent to railway station	48	26	53%	42	88%	+35%	48/100%
Total	84	59	70%	78	93%	+23%	

Note for all tables: Occupancy data and percentages are rounded to nearest whole number. Where percentage occupancy is shown to be over 100% it is because additional vehicles were parked illegally.

