

MOUNT VICTORIA

Description of the area surveyed

The Mt Victoria study area is focussed on the small commercial hub, which includes Station Street, Harley Avenue, part of the Great Western Highway, and the commuter areas.



Fig. 1: Mount Victoria Study Area

Summary of parking in Mount Victoria

The on-street parking in Mt Victoria is not time restricted and is unpaid. The highest demand for parking is in the commuter area on the western side of the railway station. Mt Victoria station is the closest station for residents in towns and localities such as Hartley, Kanimbla Valley and Oberon. Mt Victoria is a popular stopping destination for tourists travelling through the Blue Mountains on day trips.

In December 2015 the Roads and Maritime Services commenced works undertaking safety upgrades and road improvements on the Great Western Highway through Mount Victoria. These works include improvements along a 1.6km section of the highway, intersection upgrades, widened road shoulders and new pedestrian access. These works are likely to have had some impact on visitation to Mount Victoria.

During the period that parking data has been collected for this study, the western commuter carpark has been upgraded and expanded. At the time of the first count in 2010 the commuter car park provided 30 car parking spaces. At the time of the last count in 2016, the commuter car park had expanded to 60 formal car parking spaces.

Adjoining and adjacent land uses

The Mt Victoria study area contains a range of uses including a general store and post office adjacent to the highway, a hotel, guesthouse, cafes, cinema, open space and residential dwellings.

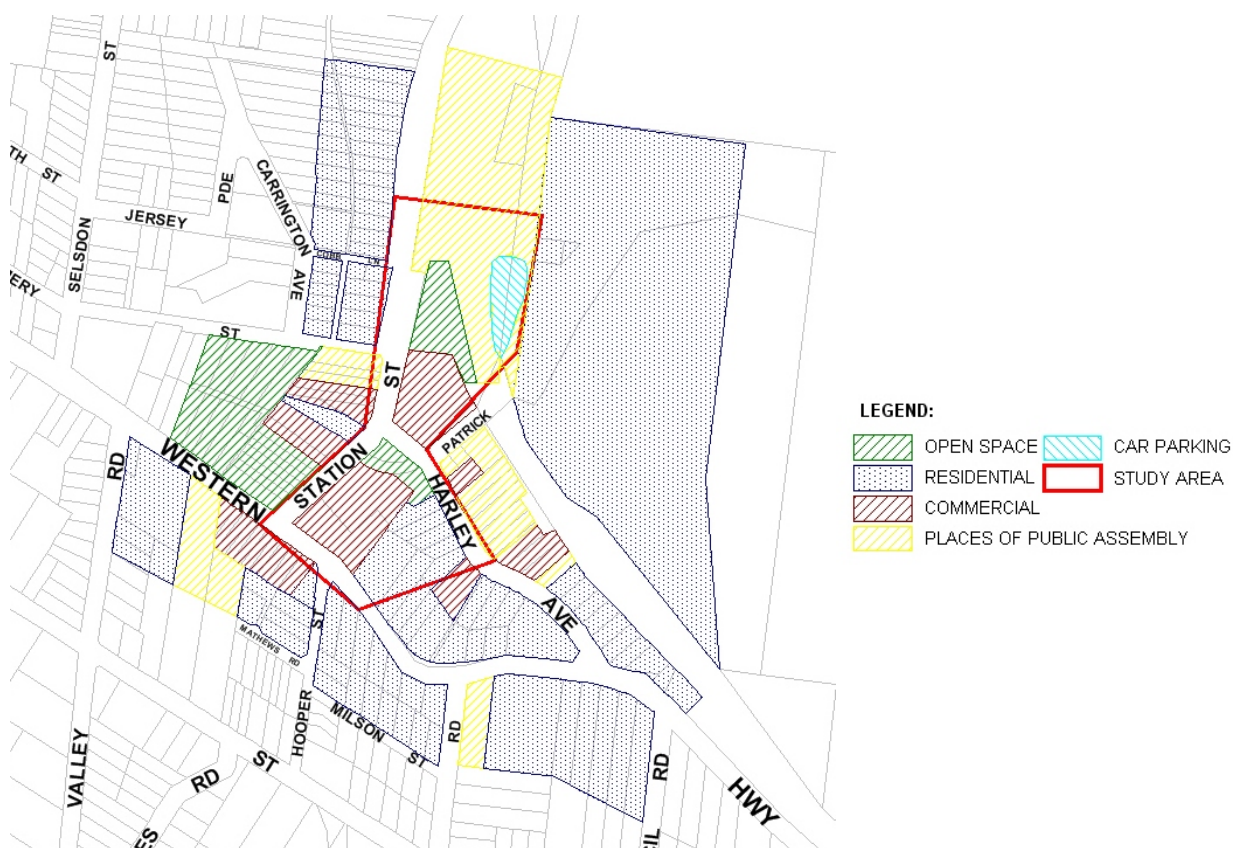


Fig. 2: Mount Victoria Study Area Land Uses

Characteristics

- Off-street parking
There is off-street parking for patrons of the hotels, motel and general store. There are commuter parking areas, a formal parking area on the western side of the railway station and an informal parking area on the eastern side of the station, which provides overflow parking.
 - Restrictions
There are no restrictions for off-street parking.
 - Accessible Spaces
An accessible space is included in the commuter car park.
- On-street parking
 - Restrictions
There are no restrictions for on-street parking.
 - Accessible Spaces
There is an accessible parking bay on Harley Ave outside Mt Vic Flicks.

- Bus, Train and Taxi services

Mt Victoria is well serviced by commuter trains to the Sydney metropolitan area, with 24 trains per day from Mt Victoria to Sydney and a similar number of return trains. The west bound platform is accessible from the commuter car park, but the east bound platform is accessed by stairs only.

Links

- Roads

Mt Victoria is centred on the Great Western Highway which provides direct access to a number of local streets. Station St and Harley Ave are the two main roads providing access to and from Mt. Victoria Station.

- Footpaths

Footpaths are being constructed along the Great Western Highway as part of the upgrades and road improvement works currently underway. There is a footpath to Mt Victoria station along the eastern side of Station St and on the eastern side of Harley Ave.

- Bike Path/Shared paths

The Blue Mountains Bike Plan has identified Route Rec 8. Regional route is located along the Great Western Highway. The Great Blue Mountains Trail is currently under construct (2017) which will connect Mt Victoria to Katoomba.

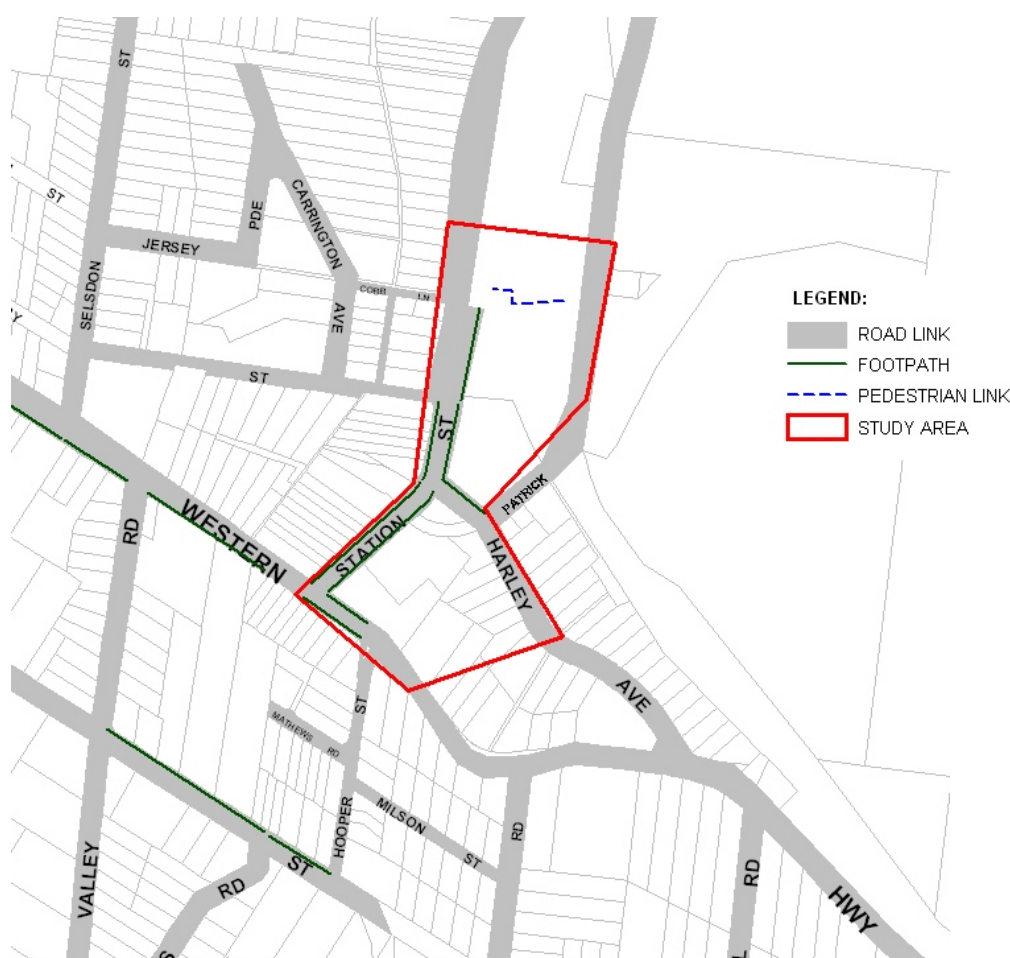


Fig. 3: Mount Victoria Study Area Links

Safety & Security

- Lighting
Street lighting is adequately provided within the study area.
- Vegetation
There are no known vegetation issues.

Signage

- Directional
There are signs along the Great Western Signage that indicate arrival at Mount Victoria.

Community demographics

In 2016 Mount Victoria had a population of 1,007 residents which is an increase of 166 persons from 2011. There were 602 dwellings, an increase of 46 from 2011. The average household size is 2.19 persons which remains steady from 2011. In 2016, the population density in Mount Victoria was 0.62 persons per hectare which is one of the lowest in the LGA.

In 2016, 82% of households in Mount Victoria had access to one or more motor vehicles.

In 2011, 224 residents travelled to work by private vehicle and 29 residents travelled to work by train.

Capacity

- Peaks
The peak demand in Mt Victoria is at the commuter car park, with an even spread of demand across the week including the weekends. Within the village area the highest demand was for parking in Station Street at weekends.

There is adequate overflow parking available in the adjacent streets or for commuters in the informal parking area on the eastern side of the station.

Rangers' Comments

No particular issues were identified.

Tourist bus parking

There are no provisions for tourist bus parking in the town centre nor is there currently demand.

Conclusion

Due to the disruption caused by the Highway works it is difficult to accurately ascertain the current parking situation in Mount Victoria. The data does show an increase in occupancy of parking spaces between 2010-12 and 2015-16, from 13 percent to 38 percent occupancy on weekdays. On weekends the figures have increased from 35 percent to 52 percent occupancy.

The number of cars parking in the commuter carpark has increased from an average of 26 vehicles to 44 vehicles, justifying the more recent expansion of this carpark by Sydney Trains.

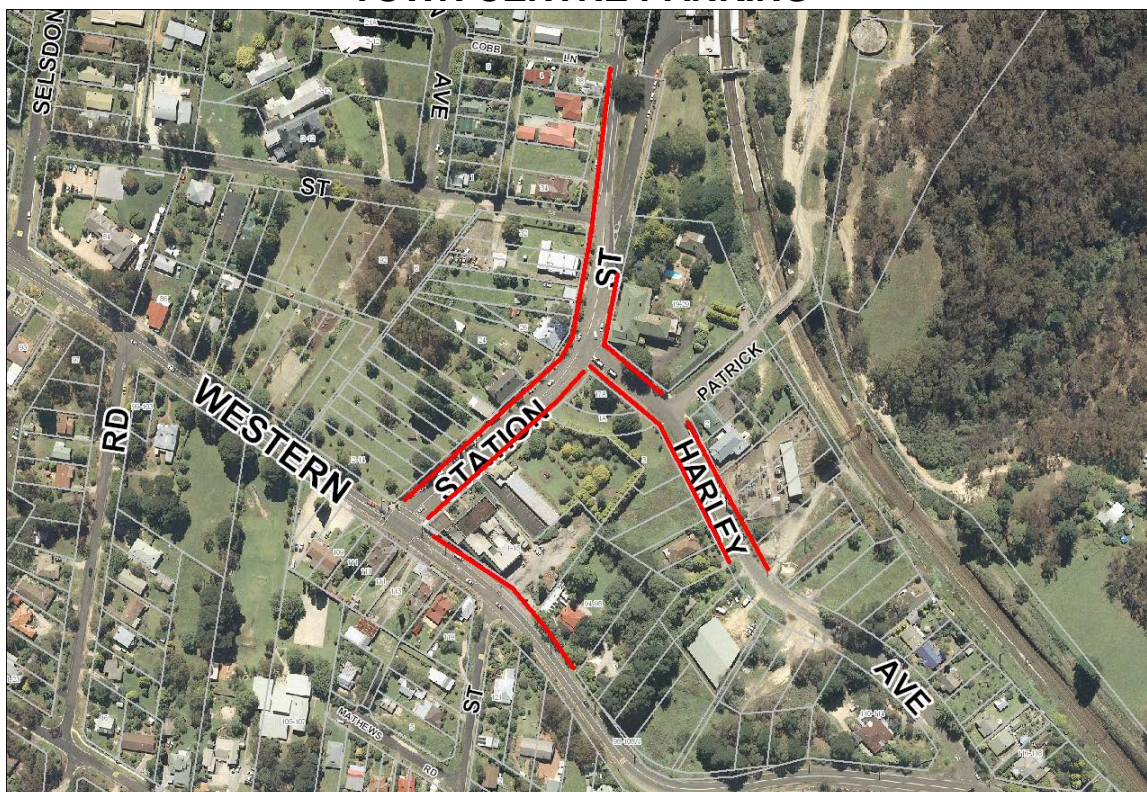
This is still considered to be a relatively low level of occupancy in Mount Victoria and the supply of parking is generally adequate for the demand. Any exceptional peaks can be accommodated in adjacent streets.

Recommendations

MV.1 Continue to monitor demand and review 2019/20 once the Great Western Highway works are complete.

Mount Victoria Data and Analysis

TOWN CENTRE PARKING



Number of vehicles parked – weekdays

	Spaces available	2010-2012		2015-2016		Difference	Maximum number/percentage occupancy
		Average occupancy - vehicles	Average percentage occupancy	Average occupancy - vehicles	Average percentage occupancy		
Station Street	36	7	19%	20	56%	+37%	20/56%
Great Western highway	11	1	8%	1	9%	+7%	3/27%
Harley Avenue	26	2	7%	7	27%	+22%	7/27%
Total	73	10	10%	28	38%	+28%	

Note for all tables: Occupancy data and percentages are rounded to nearest whole number. Where percentage occupancy is shown to be over 100% it is because additional vehicles were parked illegally.

Number of vehicles parked – weekends

	Spaces available	2010-2012		2015-2016		Difference	Maximum number/percentage occupancy
		Average occupancy - vehicles	Average percentage occupancy	Average occupancy - vehicles	Average percentage occupancy		
Station Street	36	21	58%	22	61%	3%	33/92%
Great Western highway	11	2	18%	0	0%	-18%	3/27%
Harley Avenue	26	3	10%	10	38%	29%	10/38%
Total	73	26	35%	32	52%	+17%	

COMMUTER PARKING



Number of vehicles parked

	Spaces available	2010-2012		2015-2016		Difference	Maximum number/percentage occupancy
		Average occupancy - vehicles	Average percentage occupancy	Average occupancy - vehicles	Average percentage occupancy		
Commuter car park	30/39/60 ¹	26	73%	44	73%²	+0%	33/85%

Note:

¹ The commuter car park was upgraded and the available parking was increased from 30 spaces to 39. The average occupancy takes this increase in spaces into account. Additional informal commuter parking is available on the eastern side of the station but no vehicles were observed to be parking in this area.

² The number of car parking spaces has been increased to approximately 60 spaces with the removal of a fenced storage area in May 2016. Note that parking supply has kept pace with parking demand, occupancy rate remains at 73%, despite a doubling of available parking.